

# Laboratory Filtration Products

PURIFICATION



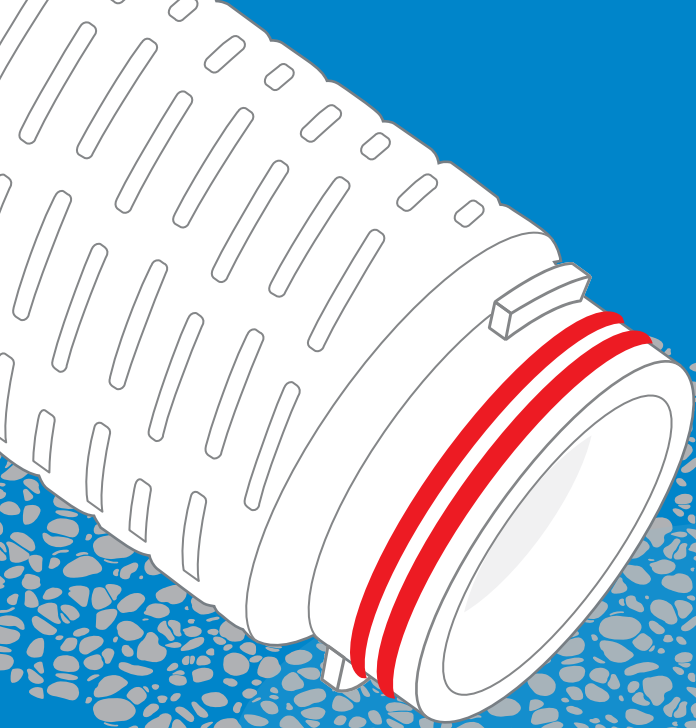
FILTRATION



SOLUTIONS

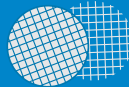


LABOR WASSER  
DE MÉXICO S.A. DE C.V.



**cobetter**<sup>®</sup>  
— filtration —

# Filtration Separation Purification



Cobetter dedicates itself to providing Filtration, Separation, & Purification

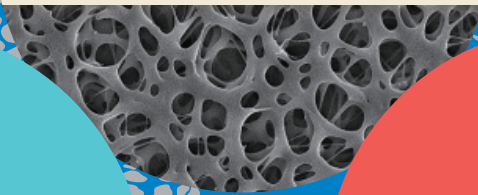
Solutions across all industries. Cobetter provides over **5,400+** technical analysis reports annually for customers in the pharmaceutical industry and over **2,500+** technical analysis reports annually for customers in chemical, microelectronics and life sciences industries

<https://www.laborwasserdemexico.com/>



**LABOR WASSER**  
DE MÉXICO S.A. DE C.V.

## Membrane Manufacturing



## AVL Center



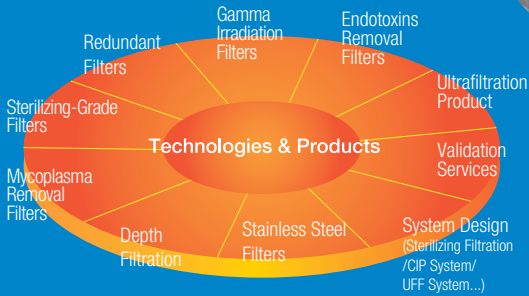
## Filter Manufacturing



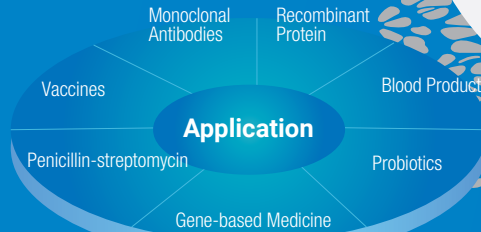
## Housing Manufacturing



### Technologies & Products



### Application



**C11** Semiconductor Ultra-pure water Degassing Membrane  
66500 SQM, 2025

**C12** Biopharma & Semiconductor filtration products manucaturing  
30000 SQM 2025.6

**C3** Factory  
Semiconductor & Biological Filter Manufacturing  
13600 SQM

**C2** Factory  
Depth Filter Manufacturing  
9000 SQM

**C1** Factory  
Membrane Filter Manufacturing  
9400 SQM

**C5** Lab  
**Semi-litho Filter**  
AVL Center 41000 SQM, 2020  
Semi-litho Filter 2800\*4 SQM 2022.12

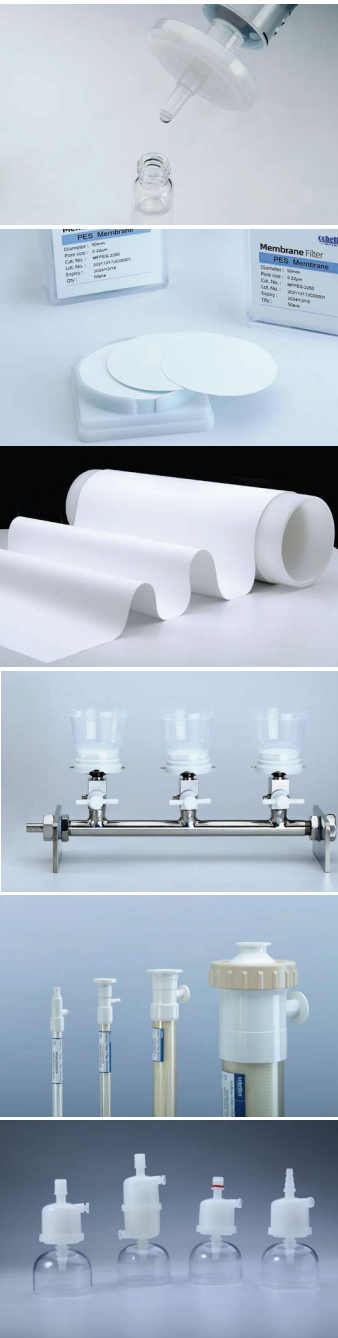
**C4** Factory  
Stainless Filter Manufacturing  
& Fluoroplastics Resurtech Manufacturing  
& Housing Manufacturing  
28000 SQM

**C6** Life Center  
Life Center 33000 SQM

**C7** Factory  
Bio-materials Research Center  
1300 SQM



# Content



## Membrane Filters

Selection Guide	6
PES Membrane Filter	7
MCE Membrane Filter	7
Nylon Membrane Filter	8
PTFE Membrane Filter	9
PVDF Membrane Filter	10
PVDF Transfer Membrane	10
PP Membrane Filter	11

## Syringe Filters

How to choose a syringe filter	12
Color-coded Syringe Filters	12
HPLC certified Syringe Filters	15
Sterile Syringe Filters	16

## Ultrafiltration

Centrifugal Filters	17
TFF Cassettes	19
TFF Holders	21
Hollow Fiber Filters	22

## Filtration Device

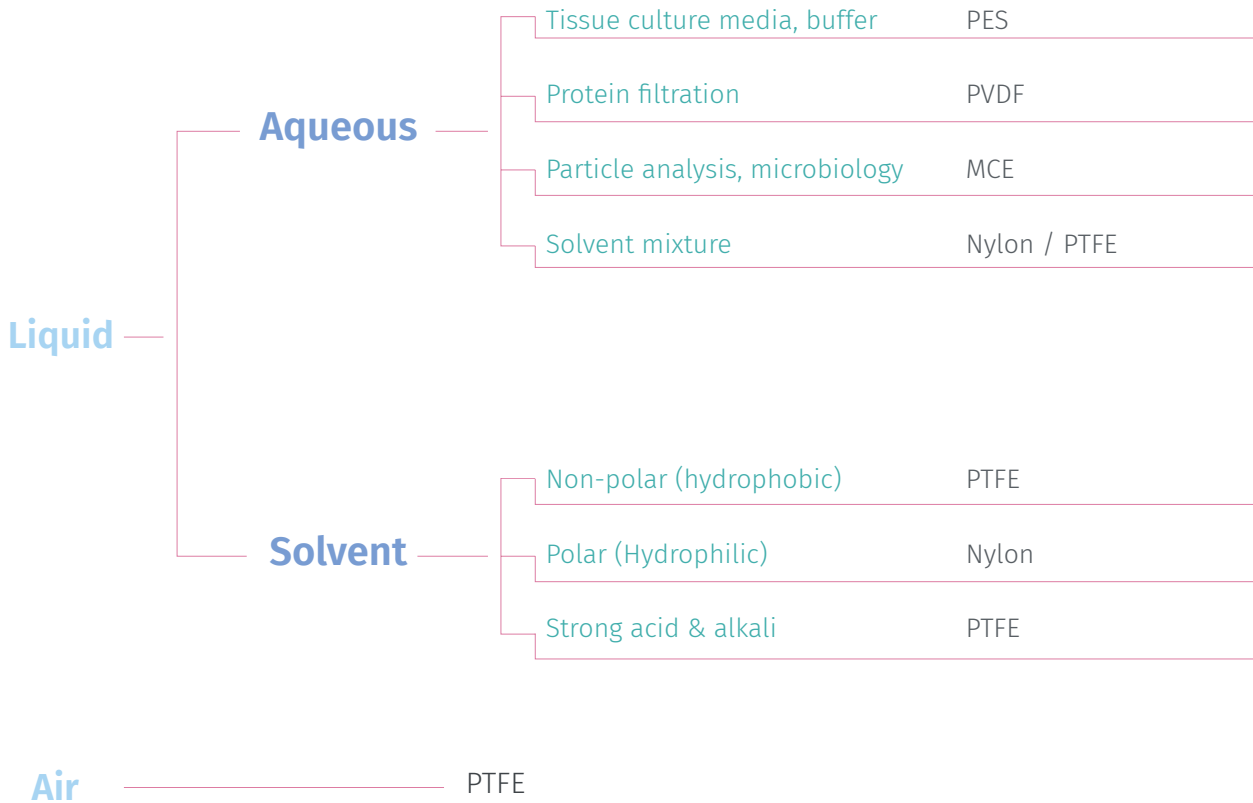
Vacuum Filters	24
Vent Filters	27
Lab Capsule Filters	30

## Microbiology Testing

Sterile Membrane Filter	33
Membrane Dispenser	34
Filtration Units	34
SS Manifold	36

# Membrane Filters

## Selection Guide



# PES Membrane Filter

## Features

- High asymmetric PES membrane
- Aqueous filtration
- Outstanding flow rates
- Lowest protein binding

## Ordering Information

Part No.	Membrane	Diameter	Pore size	Qty/pk
MFPEs-1013	PES	13mm	0.1µm	100/600
MFPEs-1025	PES	25mm	0.1µm	50/500
MFPEs-1047	PES	47mm	0.1µm	50/300
MFPEs-1090	PES	90mm	0.1µm	25
MFPEs-10142	PES	142mm	0.1µm	25
MFPEs-10293	PES	293mm	0.1µm	25
MFPEs-2213	PES	13mm	0.22µm	100/600
MFPEs-2225	PES	25mm	0.22µm	50/500
MFPEs-2247	PES	47mm	0.22µm	50/300
MFPEs-2290	PES	90mm	0.22µm	25
MFPEs-22142	PES	142mm	0.22µm	25
MFPEs-22293	PES	293mm	0.22µm	25
MFPEs-4513	PES	13mm	0.45µm	100/600
MFPEs-4525	PES	25mm	0.45µm	50/500
MFPEs-4547	PES	47mm	0.45µm	50/300
MFPEs-4590	PES	90mm	0.45µm	25
MFPEs-45142	PES	142mm	0.45µm	25
MFPEs-45293	PES	293mm	0.45µm	25



# MCE Membrane Filter

## Features

- For particle removal and environmental monitoring applications
- Available in a range of pore sizes
- Fastest flow rate

## Ordering Information

Part No.	Membrane	Diameter	Pore size	Qty/pk
MFMCe-2247	Mixed Cellulose Ester	47mm	0.22µm	50/300
MFMCe-4547	Mixed Cellulose Ester	47mm	0.45µm	50/300
MFMCe-6547	Mixed Cellulose Ester	47mm	0.65µm	50/300
MFMCe-8047	Mixed Cellulose Ester	47mm	0.8µm	50/300



# Nylon membrane Filter

## Features

- Broad chemical compatibility and used for HPLC solvents
- Low extractables
- Recommended for DMSO filtration

## Ordering Information

Part No.	Membrane	Diameter	Pore size	Qty/pk
MFNY-2213	Nylon	13mm	0.22µm	100/600
MFNY-2225	Nylon	25mm	0.22µm	50/500
MFNY-2247	Nylon	47mm	0.22µm	50/300
MFNY-2290	Nylon	90mm	0.22µm	25
MFNY-22142	Nylon	142mm	0.22µm	25
MFNY-22293	Nylon	293mm	0.22µm	25
MFNY-4513	Nylon	13mm	0.45µm	100/600
MFNY-4525	Nylon	25mm	0.45µm	50/500
MFNY-4547	Nylon	47mm	0.45µm	50/300
MFNY-4590	Nylon	90mm	0.45µm	25
MFNY-45142	Nylon	142mm	0.45µm	25
MFNY-45293	Nylon	293mm	0.45µm	25
MFNY-50013	Nylon	13mm	5.0µm	100/600
MFNY-50025	Nylon	25mm	5.0µm	50/500
MFNY-50047	Nylon	47mm	5.0µm	50/300
MFNY-50090	Nylon	90mm	5.0µm	25
MFNY-500142	Nylon	142mm	5.0µm	25
MFNY-500293	Nylon	293mm	5.0µm	25



# PTFE Membrane Filter

## Features

- Naturally hydrophobic
- Broad chemical compatibility, pH range 1-14
- Solvent filtration
- Air/gas venting

## Ordering Information

Part No.	Membrane	Diameter	Pore size	Qty/pk
MFPT-1013	Hydrophobic PTFE	13mm	0.1µm	100/600
MFPT-1025	Hydrophobic PTFE	25mm	0.1µm	50/500
MFPT-1047	Hydrophobic PTFE	47mm	0.1µm	50/300
MFPT-1090	Hydrophobic PTFE	90mm	0.1µm	25
MFPT-10142	Hydrophobic PTFE	142mm	0.1µm	25
MFPT-10293	Hydrophobic PTFE	293mm	0.1µm	25
MFPT-2213	Hydrophobic PTFE	13mm	0.22µm	100/600
MFPT-2225	Hydrophobic PTFE	25mm	0.22µm	50/500
MFPT-2247	Hydrophobic PTFE	47mm	0.22µm	50/300
MFPT-2290	Hydrophobic PTFE	90mm	0.22µm	25
MFPT-22142	Hydrophobic PTFE	142mm	0.22µm	25
MFPT-22293	Hydrophobic PTFE	293mm	0.22µm	25
MFPT-4513	Hydrophobic PTFE	13mm	0.45µm	100/600
MFPT-4525	Hydrophobic PTFE	25mm	0.45µm	50/500
MFPT-4547	Hydrophobic PTFE	47mm	0.45µm	50/300
MFPT-4590	Hydrophobic PTFE	90mm	0.45µm	25
MFPT-45142	Hydrophobic PTFE	142mm	0.45µm	25
MFPT-45293	Hydrophobic PTFE	293mm	0.45µm	25

Part No.	Membrane	Diameter	Pore size	Qty/pk
MFPTH-1013	Hydrophilic PTFE	13mm	0.1µm	100/600
MFPTH-1025	Hydrophilic PTFE	25mm	0.1µm	50/500
MFPTH-1047	Hydrophilic PTFE	47mm	0.1µm	50/300
MFPTH-2213	Hydrophilic PTFE	13mm	0.22µm	100/600
MFPTH-2225	Hydrophilic PTFE	25mm	0.22µm	50/500
MFPTH-2247	Hydrophilic PTFE	47mm	0.22µm	50/300
MFPTH-4513	Hydrophilic PTFE	13mm	0.45µm	100/600
MFPTH-4525	Hydrophilic PTFE	25mm	0.45µm	50/500
MFPTH-4547	Hydrophilic PTFE	47mm	0.45µm	50/300





# PVDF Membrane Filter

## Features

- Very low protein binding
- Low extractables
- Hydrophilic PVDF is ideal for protein filtration

## Ordering Information

Part No.	Membrane	Diameter	Pore size	Qty/pk
MFPVH-2225	Hydrophilic PVDF	25mm	0.22µm	50/500
MFPVH-2247	Hydrophilic PVDF	47mm	0.22µm	50/300
MFPVH-4525	Hydrophilic PVDF	25mm	0.45µm	50/500
MFPVH-4547	Hydrophilic PVDF	47mm	0.45µm	50/300
MFPV-2247	Hydrophobic PVDF	47mm	0.22µm	50/500
MFPV-4547	Hydrophobic PVDF	47mm	0.45µm	50/300



# PVDF Transfer Membrane

## Features

- Hydrophobic PVDF membrane
- Low background fluorescence for western blotting
- High binding capacity for biomolecules

## Application

### Pore size 0.45µm

- Target protein expressed over a broad dynamic range
- Wide range of molecular weights

### Pore size 0.22µm

- Target protein <20 kDa
- Low-abundance target protein



## Ordering Information

Part No.	Membrane	Diameter	Pore size	Qty/pk
3350YH-R2703	Hydrophobic PVDF	265mm*3.75m	0.2µm	1 roll
3350YH-F150	Hydrophobic PVDF	150mm*150mm	0.2µm	25 pcs
3350YH-F200	Hydrophobic PVDF	200mm*200mm	0.2µm	25 pcs
3350YH-F8470	Hydrophobic PVDF	84mm*70mm	0.2µm	50 pcs
TS2590H-R2703	Hydrophobic PVDF	265mm*3.75m	0.45µm	1 roll
TS2590H-F150	Hydrophobic PVDF	150mm*150mm	0.45µm	25 pcs
TS2590H-F200	Hydrophobic PVDF	200mm*200mm	0.45µm	25 pcs
TS2590H-F8470	Hydrophobic PVDF	84mm*70mm	0.45µm	50 pcs

# PP Membrane Filter

## Features

- Broad range of pore size
- Compatible with aggressive solvents
- Prefilters have high dirt-holding capacity

## Ordering Information

Part No.	Membrane	Diameter	Pore size	Qty/pk
MFPP-2225	PP	25mm	0.22µm	50/500
MFPP-2247	PP	47mm	0.22µm	50/300
MFPP-2290	PP	90mm	0.22µm	25
MFPP-4525	PP	25mm	0.45µm	50/500
MFPP-4547	PP	47mm	0.45µm	50/300
MFPP-4590	PP	90mm	0.45µm	25
MFPP-10025	PP	25mm	1.2µm	50/500
MFPP-10047	PP	47mm	1.2µm	50/300
MFPP-10090	PP	90mm	1.2µm	25
MFPP-30025	PP	25mm	3µm	50/500
MFPP-30047	PP	47mm	3µm	50/300
MFPP-30090	PP	90mm	3µm	25
MFPP-50025	PP	25mm	5µm	50/500
MFPP-50047	PP	47mm	5µm	50/300
MFPP-50090	PP	90mm	5µm	25

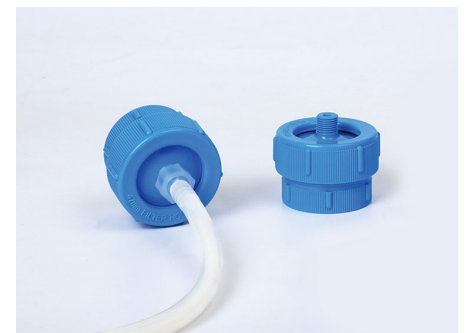


# PP Reusable Filter Holder

For filtration of small volumes of liquids using positive pressure

## Specifications

Material	Polypropylene
Effective Filtration Area	13.8 cm <sup>2</sup>
Membrane diameter	47mm
OD	60mm x 52mm
Inlet/Outlet	1/4" NPT thread; 1/4" NPT threaded male
O-ring	Silicone
Maximum Operating Pressure	0.5MPa @25°C



## Ordering Information

Part No.	Description	Package
47FH-S	PP reusable filter holder accept a 47mm membrane filter	1pc/pk

# How to choose a syringe filter?

## By sample volume

Sample volume	Recommended Diameter	Hold up volume
1-10 mL	13 mm	< 25µL
5mL to 100 mL	25 mm	< 100µL
10mL to 200 mL	33 mm	< 125µL

## By application

Type of Filtration	Choice of Syringe Filter
HPLC * UHPLC * LC/MS	Nylon, PES
ICP-MS	RC, Hydrophilic PTFE
Undiluted solvent	PTFE
Gas/ Strong acid / alkali	PTFE
Protein analysis	Hydrophilic PVDF
Tissue culture media, buffer	PES
High particle liquid	Dual layer Nylon/PES

## Color-coded Syringe Filters

### Nylon Syringe Filters

#### Features

- Naturally hydrophilic
- Chemically resistant to alkaline solutions and organic solvents



#### Ordering Information

Part No.	Membrane	Diameter	Pore size	Qty/ box (pcs)
SFMNY-2213	Nylon	13mm	0.22µm	100
SFMNY-4513	Nylon	13mm	0.45µm	100
SFMNY-8013	Nylon	13mm	0.8µm	100
SFMNY-2225	Nylon	25mm	0.22µm	100
SFMNY-4525	Nylon	25mm	0.45µm	100
SFMNY-8025	Nylon	25mm	0.8µm	100
SFMNY-2233	Nylon	33mm	0.22µm	100
SFMNY-4533	Nylon	33mm	0.45µm	100
SFMNY-8033	Nylon	33mm	0.8µm	100

# PES Syringe Filters

## Features

- High flow rate and low non-specific protein adsorptive
- Excellent for the filtration of aqueous solutions and pharmaceutical solutions



## Ordering Information

Part No.	Membrane	Diameter	Pore size	Qty/box (pcs)
SFMPES-2213	PES	13mm	0.22µm	100
SFMPES-4513	PES	13mm	0.45µm	100
SFMPES-8013	PES	13mm	0.8µm	100
SFMPES-2225	PES	25mm	0.22µm	100
SFMPES-4525	PES	25mm	0.45µm	100
SFMPES-8025	PES	25mm	0.8µm	100
SFMPES-2233	PES	33mm	0.22µm	100
SFMPES-4533	PES	33mm	0.45µm	100
SFMPES-8033	PES	33mm	0.8µm	100

# MCE Syringe Filters

## Features

- High flow rates
- Particle Retention and Removal for aqueous solutions



## Ordering Information

Part No.	Membrane	Diameter	Pore size	Qty/box (pcs)
SFMMCE-2213	MCE	13mm	0.22µm	100
SFMMCE-4513	MCE	13mm	0.45µm	100
SFMMCE-8013	MCE	13mm	0.8µm	100
SFMMCE-2225	MCE	25mm	0.22µm	100
SFMMCE-4525	MCE	25mm	0.45µm	100
SFMMCE-8025	MCE	25mm	0.8µm	100
SFMMCE-2233	MCE	33mm	0.22µm	100
SFMMCE-4533	MCE	33mm	0.45µm	100
SFMMCE-8033	MCE	33mm	0.8µm	100

# PTFE Syringe Filters

## Features

- Broad chemical compatibility, highly resistant to strong acids and bases
- Gas/air venting

## Ordering Information

Part No.	Membrane	Diameter	Pore size	Qty/box (pcs)
SFMPT-2213	PTFE	13mm	0.22µm	100
SFMPT-4513	PTFE	13mm	0.45µm	100
SFMPT-8013	PTFE	13mm	0.8µm	100
SFMPT-2225	PTFE	25mm	0.22µm	100
SFMPT-4525	PTFE	25mm	0.45µm	100
SFMPT-8025	PTFE	25mm	0.8µm	100
SFMPT-2233	PTFE	33mm	0.22µm	100
SFMPT-4533	PTFE	33mm	0.45µm	100
SFMPT-8033	PTFE	33mm	0.8µm	100
SFMPTH-2213	Hydrophilic PTFE	13mm	0.22µm	100
SFMPTH-4513	Hydrophilic PTFE	13mm	0.45µm	100
SFMPTH-2225	Hydrophilic PTFE	25mm	0.22µm	100
SFMPTH-4525	Hydrophilic PTFE	25mm	0.45µm	100
SFMPTH-2233	Hydrophilic PTFE	33mm	0.22µm	100
SFMPTH-4533	Hydrophilic PTFE	33mm	0.45µm	100



# Hydrophilic PVDF Syringe Filters

## Features

- Recommended for low protein binding
- Compatible with aqueous and mild organic solutions

## Ordering Information

Part No.	Membrane	Diameter	Pore size	Qty/box (pcs)
SFMPVH-1013	Hydrophilic PVDF	13mm	0.1µm	100
SFMPVH-2213	Hydrophilic PVDF	13mm	0.22µm	100
SFMPVH-4513	Hydrophilic PVDF	13mm	0.45µm	100
SFMPVH-1025	Hydrophilic PVDF	25mm	0.1µm	100
SFMPVH-2225	Hydrophilic PVDF	25mm	0.22µm	100
SFMPVH-4525	Hydrophilic PVDF	25mm	0.45µm	100
SFMPVH-1033	Hydrophilic PVDF	33mm	0.1µm	100
SFMPVH-2233	Hydrophilic PVDF	33mm	0.22µm	100
SFMPVH-4533	Hydrophilic PVDF	33mm	0.45µm	100



# PP Syringe Filters

## Features

- Prefiltration
- Available in multiple pore sizes



## Ordering Information

Part No.	Membrane	Diameter	Pore size	Qty/box (pcs)
SFUPP-2013	PP	13mm	0.2µm	100
SFUPP-4513	PP	13mm	0.45µm	100
SFUPP-2025	PP	25mm	0.2µm	100
SFUPP-4525	PP	25mm	0.45µm	100
SFUPP-10025	PP	25mm	1.0µm	100
SFUPP-50025	PP	25mm	5.0µm	100

## HPLC Certified Syringe Filters

# Hydrophilic PTFE Syringe Filters

## Features

- Lowest extractables
- Optimizing background levels of sensitive analyses like UHPLC and LC-MS
- Filtration of aqueous or organic solutions



## Ordering Information

Part No.	Membrane	Diameter	Pore size	Qty/box (pcs)
SFUPTH-2013	Hydrophilic PTFE	13mm	0.2µm	100
SFUPTH-4513	Hydrophilic PTFE	13mm	0.45µm	100
SFUPTH-2025	Hydrophilic PTFE	25mm	0.2µm	100
SFUPTH-4525	Hydrophilic PTFE	25mm	0.45µm	100

# Sterile Syringe Filters

## Features

- Sterile by Gamma irradiation and individually packed
- Removal of particles or cells under non-sterile conditions
- Asymmetric PES with superior flow rate
- Hydrophilic PVDF is ideal for filtration of biological samples and protein solutions

## PES Sterile Syringe Filters

Part No.	Membrane	Diameter	Prefilter	Pore size	Sterilization	Qty/box (pcs)
SFMPES-1013S	PES	13mm	0.2µm	0.1µm	Yes	100
SFMPES-2213S	PES	13mm	0.65µm	0.22µm	Yes	100
SFMPES-4513S	PES	13mm	0.8µm	0.45µm	Yes	100
SFMPES-1025S	PES	25mm	0.2µm	0.1µm	Yes	100
SFMPES-2225S	PES	25mm	0.65µm	0.22µm	Yes	100
SFMPES-4525S	PES	25mm	0.8µm	0.45µm	Yes	100
SFMPES-1033S	PES	33mm	0.2µm	0.1µm	Yes	100
SFMPES-2233S	PES	33mm	0.65µm	0.22µm	Yes	100
SFMPES-4533S	PES	33mm	0.8µm	0.45µm	Yes	100



## Hydrophilic PVDF Sterile Syringe Filters

Part No.	Membrane	Diameter	Prefilter	Pore size	Sterilization	Qty/box (pcs)
SFMPVH-1013S	Hydrophilic PVDF	13mm	0.2µm	0.1µm	Yes	100
SFMPVH-2213S	Hydrophilic PVDF	13mm	0.65µm	0.22µm	Yes	100
SFMPVH-4513S	Hydrophilic PVDF	13mm	1.0µm	0.45µm	Yes	100
SFMPVH-1025S	Hydrophilic PVDF	25mm	0.2µm	0.1µm	Yes	100
SFMPVH-2225S	Hydrophilic PVDF	25mm	0.65µm	0.22µm	Yes	100
SFMPVH-4525S	Hydrophilic PVDF	25mm	1.0µm	0.45µm	Yes	100
SFMPVH-10 33S	Hydrophilic PVDF	33mm	0.2µm	0.1µm	Yes	100
SFMPVH-2233S	Hydrophilic PVDF	33mm	0.65µm	0.22µm	Yes	100
SFMPVH-4533S	Hydrophilic PVDF	33mm	1.0µm	0.45µm	Yes	100



# Ultrafiltration

## Centrifugal Filters

### Features

- RC membrane, very low non-specific binding
- High (typically >90%) recovery
- Quick processing time ( as little as 10–60 minutes)
- Rapid protein concentration (80-100 fold concentration)
- Broad chemical compatibility



### Specifications

Maximum sample capacity				
Fixed angle 45°	0.5ml	2ml	4ml	15ml
Swing bucket		2ml	4ml	15ml
Recommended final concentrate volume	15-20µL	20-70µL	80-200µL	150-300µL
<b>Max.centrifuge force</b>				
Fixed angle 45°	14000 xg	5000 xg	5000 xg	5000 xg
Swing bucket		4000 xg	4000 xg	4000 xg
Effective filter area	0.6 cm <sup>2</sup>	1.4 cm <sup>2</sup>	3.4 cm <sup>2</sup>	7.4 cm <sup>2</sup>
<b>Dimensions</b>				
Length (with cover)	53 mm	120.0 mm	124.5 mm	119.6 mm
Lid diameter			23 mm	33.5 mm
Tube diameter	12.5 mm	16.3 mm	16.9 mm / 15.9 mm	29 mm / 28 mm
<b>Material</b>				
Membrane	RC	RC	RC	RC
Lid			HDPE	HDPE
Ultrafiltration device	PS	GPPS	GPPS	GPPS
Centrifuge tube	PP	PP	PP	PP
Seals	Silicone	Silicone	Silicone	Silicone



## Ordering Information



Part No.	MWCO	Specification	Color Code	Qty/pk (pcs)
ULRT0030150P	3kDa, RC Membrane	15mL	Blue	24
ULRC0100150P	10kDa, RC Membrane	15mL	Red	24
ULRC0300150P	30kDa, RC Membrane	15mL	Yellow	24
ULRC0500150P	50kDa, RC Membrane	15mL	Orange	24
ULRC1000150P	100kDa, RC Membrane	15mL	Green	24
ULRT0030040P	3kDa, RC Membrane	4mL	Blue	15
ULRC0100040P	10kDa, RC Membrane	4mL	Red	15
ULRC0300040P	30kDa, RC Membrane	4mL	Yellow	15
ULRC0500040P	50kDa, RC Membrane	4mL	Orange	15
ULRC1000040P	100kDa, RC Membrane	4mL	Green	15
ULRT0030020P	3kDa, RC Membrane	2mL		15
ULRC0100020P	10kDa, RC Membrane	2mL		15
ULRC0300020P	30kDa, RC Membrane	2mL		15
ULRC0500020P	50kDa, RC Membrane	2mL		15
ULRC1000020P	100kDa, RC RC Membrane	2mL		15
ULRT0030005P	3kDa, RC Membrane	0.5mL		24
ULRC0100005P	10kDa, RC Membrane	0.5mL		24
ULRC0300005P	30kDa, RC Membrane	0.5mL		24
ULRC0500005P	50kDa, RC Membrane	0.5mL		24
ULRC1000005P	100kDa, RC Membrane	0.5mL		24

# TFF Cassettes

## Features

- Optimum tangential flow filtration devices
- RC ultrafiltration membrane performs ultra-low protein adsorption
- PES ultrafiltration membrane is stable over a broad pH and temperature range
- Higher yields, long product life and optimum product recovery
- Easy installation & care



## Typical Application

- Peptide
- Oligonucleotide
- Proteins (Albumin), Blood Factors
- Monoclonal antibodies (mAb)
- Vaccines

## Construction information

Materials	PES , RC
Material Features	Low protein binding and high product yield superior flow rates
PH Range	Broad chemical compatibility: PES pH 1-14, RC pH 2-13
NMWL	3(Only RC)/5/8/10/30/50/100/300KD
Operating Temperature Range	4-50°C
Max. Operating Pressure	6.0 bar @ 25°C
Diffusion Flow (Air)	0.11 m <sup>2</sup> ≤12ml/min @ 1.0bar, 0.46 m <sup>2</sup> ≤50ml/min @ 1.0bar
Pressure Drop	0.3-0.6 bar (Circulation Flow Rate 6L/min/m <sup>2</sup> )

Types	Available Size	Applications	Throughput	Notes
Lab LA	100 cm <sup>2</sup> 0.11 m <sup>2</sup>	R&D R&D, Pilot Production	200 - 2000ml 5 - 50L	Membrane Cassette ; Stainless Steel Holder required
Flow FL	0.46 m <sup>2</sup> 2.33 m <sup>2</sup>	Pilot Production, Large Scale Production Pilot Production, Large Scale Production	> 50L > 50L	

### RC TFF cassette Ordering Information

Part No.	Description	Package
UFCLA0001001P	Lab RC TFF cassette, filtration area: 0.01m <sup>2</sup> , MWCO: 1kDa	1
UFCLA0002001P	Lab RC TFF cassette, filtration area: 0.01m <sup>2</sup> , MWCO: 2kDa	1
UFCLA0003001P	Lab RC TFF cassette, filtration area: 0.01m <sup>2</sup> , MWCO: 3kDa	1
UFCLA0005001P	Lab RC TFF cassette, filtration area: 0.01m <sup>2</sup> , MWCO: 5kDa	1
UFCLA0010001P	Lab RC TFF cassette, filtration area: 0.01m <sup>2</sup> , MWCO: 10kDa	1
UFCLA0030001P	Lab RC TFF cassette, filtration area: 0.01m <sup>2</sup> , MWCO: 30kDa	1
UFCLA0001010P	Lab RC TFF cassette, filtration area: 0.11m <sup>2</sup> , MWCO: 1kDa	1
UFCLA0002010P	Lab RC TFF cassette, filtration area: 0.11m <sup>2</sup> , MWCO: 2kDa	1
UFCLA0003010P	Lab RC TFF cassette, filtration area: 0.11m <sup>2</sup> , MWCO: 3kDa	1
UFCLA0005010P	Lab RC TFF cassette, filtration area: 0.11m <sup>2</sup> , MWCO: 5kDa	1
UFCLA0010010P	Lab RC TFF cassette, filtration area: 0.11m <sup>2</sup> , MWCO: 10kDa	1
UFCLA0030010P	Lab RC TFF cassette, filtration area: 0.11m <sup>2</sup> , MWCO: 30kDa	1

### PES TFF cassette Ordering Information

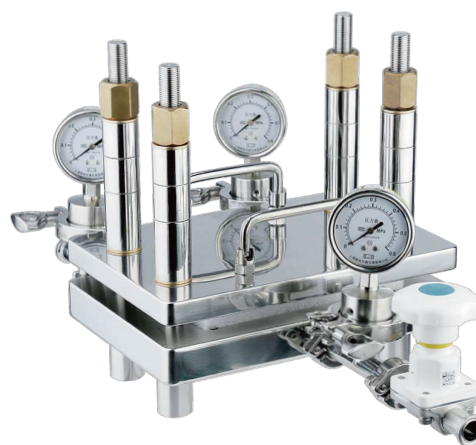
Part No.	Description	Package
UFELA0001001	Lab PES TFF cassette, filtration area: 0.01m <sup>2</sup> , MWCO: 1kDa	1
UFELA0003001	Lab PES TFF cassette, filtration area: 0.01m <sup>2</sup> , MWCO: 3kDa	1
UFELA0005001	Lab PES TFF cassette, filtration area: 0.01m <sup>2</sup> , MWCO: 5kDa	1
UFELA0008001	Lab PES TFF cassette, filtration area: 0.01m <sup>2</sup> , MWCO: 8kDa	1
UFELA0010001	Lab PES TFF cassette, filtration area: 0.01m <sup>2</sup> , MWCO: 10kDa	1
UFELA0030001	Lab PES TFF cassette, filtration area: 0.01m <sup>2</sup> , MWCO: 30kDa	1
UFELA0050001	Lab PES TFF cassette, filtration area: 0.01m <sup>2</sup> , MWCO: 50kDa	1
UFELA0100001	Lab PES TFF cassette, filtration area: 0.01m <sup>2</sup> , MWCO: 100kDa	1
UFELA0300001	Lab PES TFF cassette, filtration area: 0.01m <sup>2</sup> , MWCO: 300kDa	1
UFELA0001010	Lab PES TFF cassette, filtration area: 0.11m <sup>2</sup> , MWCO: 1kDa	1
UFELA0003010	Lab PES TFF cassette, filtration area: 0.11m <sup>2</sup> , MWCO: 3kDa	1
UFELA0005010	Lab PES TFF cassette, filtration area: 0.11m <sup>2</sup> , MWCO: 5kDa	1
UFELA0008010	Lab PES TFF cassette, filtration area: 0.11m <sup>2</sup> , MWCO: 8kDa	1
UFELA0010010	Lab PES TFF cassette, filtration area: 0.11m <sup>2</sup> , MWCO: 10kDa	1
UFELA0030010	Lab PES TFF cassette, filtration area: 0.11m <sup>2</sup> , MWCO: 30kDa	1
UFELA0050010	Lab PES TFF cassette, filtration area: 0.11m <sup>2</sup> , MWCO: 50kDa	1
UFELA0100010	Lab PES TFF cassette, filtration area: 0.11m <sup>2</sup> , MWCO: 100kDa	1
UFELA0300010	Lab PES TFF cassette, filtration area: 0.11m <sup>2</sup> , MWCO: 300kDa	1

# TFF Holders



## 0.1 m<sup>2</sup> Stainless Steel Holder

Process development and small-volume parentals production with an EFA of 0.1m<sup>2</sup>. Unique design is fully compliant with biopharmaceutical applications and their requirements.



## 0.5 m<sup>2</sup> Stainless Steel Holder

Accomodate an effective filter area of 0.5 m<sup>2</sup> -2.5 m<sup>2</sup> up to 5 m<sup>2</sup>

### Construction information

Pump	Peristaltic Pump		
Holder	Sanitary Cassette Holder		
Membrane	Lab	100 cm <sup>2</sup>	0.1 m <sup>2</sup>
	Flow	0.46 m <sup>2</sup>	2.33 m <sup>2</sup>
Pipe	Hygienic silicone tubes, autoclavable		
PressureGauge	Sanitary diaphragm pressure gauge		
Connections	Sanitary clamp connection		

### Ordering Information

Part No.	Description	Package
H-MB0.1 m <sup>2</sup> SSAXP	316L Lab TFF holder, use with 0.11m <sup>2</sup> TFF cassette, contains three valves, two pressure gauges	1
H-MB0.5 m <sup>2</sup> SSAXP	316L Lab TFF holder, use with 0.5m <sup>2</sup> TFF cassette, contains three valves, two pressure gauges	1

# Hollow Fiber Filters

## Features

- High-performance separation in cell harvest, clarification, perfusion, diafiltration and concentration
- Low binding modified polyethersulfone membranes (m-PES)
- Single-use solution
- Small footprint



## Specifications

Module	Module, Fiber ID (mm)	Recommended Batch	Volume, Length (cm)	Filtration Area (cm <sup>2</sup> )	Number of Fibers	Feed/Retentate Connectors	Permeate Connectors
Min	0.5	< 300mL	30	28	6		
	0.5	< 600mL	60	56	6		
Minilab	0.5	< 1L	30	118	25	Female luer lock	Female luer lock
	0.5	< 2L	60	236	25		
Lab	0.5	< 2L	30	236	50	0.5"TC	3/16"HB
	0.5	< 4L	60	471	50		
Min	1.0	< 300mL	30	28	3		
	1.0	< 600mL	60	56	3		
Minilab	1.0	< 1L	30	94	10	Female luer lock	Female luer lock
	1.0	< 2L	60	188	10		
Lab	1.0	< 2L	30	170	18	0.5"TC	3/16"HB
	1.0	< 4L	60	340	18		

## Ordering Information

Part No.	Description	Package
HFEMN01000530P	ID 0.5mm, Mini, PES, FA: 28cm <sup>2</sup> , MWCO: 100kDa, Effective length: 30cm	1
HFEMN03000530P	ID 0.5mm, Mini, PES, FA: 28cm <sup>2</sup> , MWCO: 300kDa, Effective length: 30cm	1
HFEMN05000530P	ID 0.5mm, Mini, PES, FA: 28cm <sup>2</sup> , MWCO: 500kDa, Effective length: 30cm	1
HFEMN07500530P	ID 0.5mm, Mini, PES, FA: 28cm <sup>2</sup> , MWCO: 750kDa, Effective length: 30cm	1
HFEMN01000560P	ID 0.5mm, Mini, PES, FA: 56cm <sup>2</sup> , MWCO: 100kDa, Effective length: 60cm	1
HFEMN03000560P	ID 0.5mm, Mini, PES, FA: 56cm <sup>2</sup> , MWCO: 300kDa, Effective length: 60cm	1
HFEMN05000560P	ID 0.5mm, Mini, PES, FA: 56cm <sup>2</sup> , MWCO: 500kDa, Effective length: 60cm	1
HFEMN07500560P	ID 0.5mm, Mini, PES, FA: 56cm <sup>2</sup> , MWCO: 750kDa, Effective length: 60cm	1

Part No.	Description	Package
HFEMIO1000530P	ID 0.5mm, Minilab, PES, FA: 118cm <sup>2</sup> , MWCO: 100kDa, Effective length: 30cm	1
HFEMIO3000530P	ID 0.5mm, Minilab, PES, FA: 118cm <sup>2</sup> , MWCO: 300kDa, Effective length: 30cm	1
HFEMIO5000530P	ID 0.5mm, Minilab, PES, FA: 118cm <sup>2</sup> , MWCO: 500kDa, Effective length: 30cm	1
HFEMIO7500530P	ID 0.5mm, Minilab, PES, FA: 118cm <sup>2</sup> , MWCO: 750kDa, Effective length: 30cm	1
HFEMIO1000560P	ID 0.5mm, Minilab, PES, FA: 236cm <sup>2</sup> , MWCO: 100kDa, Effective length: 60cm	1
HFEMIO3000560P	ID 0.5mm, Minilab, PES, FA: 236cm <sup>2</sup> , MWCO: 300kDa, Effective length: 60cm	1
HFEMIO5000560P	ID 0.5mm, Minilab, PES, FA: 236cm <sup>2</sup> , MWCO: 500kDa, Effective length: 60cm	1
HFEMIO7500560P	ID 0.5mm, Minilab, PES, FA: 236cm <sup>2</sup> , MWCO: 750kDa, Effective length: 60cm	1
HFELA01000530P	ID 0.5mm, Lab, PES, FA: 236cm <sup>2</sup> , MWCO: 100kDa, Effective length: 30cm	1
HFELA03000530P	ID 0.5mm, Lab, PES, FA: 236cm <sup>2</sup> , MWCO: 300kDa, Effective length: 30cm	1
HFELA05000530P	ID 0.5mm, Lab, PES, FA: 236cm <sup>2</sup> , MWCO: 500kDa, Effective length: 30cm	1
HFELA07500530P	ID 0.5mm, Lab, PES, FA: 236cm <sup>2</sup> , MWCO: 750kDa, Effective length: 30cm	1
HFELA01000560P	ID 0.5mm, Lab, PES, FA: 471cm <sup>2</sup> , MWCO: 100kDa, Effective length: 60cm	1
HFELA03000560P	ID 0.5mm, Lab, PES, FA: 471cm <sup>2</sup> , MWCO: 300kDa, Effective length: 60cm	1
HFELA05000560P	ID 0.5mm, Lab, PES, FA: 471cm <sup>2</sup> , MWCO: 500kDa, Effective length: 60cm	1
HFELA07500560P	ID 0.5mm, Lab, PES, FA: 471cm <sup>2</sup> , MWCO: 750kDa, Effective length: 60cm	1
HFEMN01001030P	ID 1.0mm, Mini, PES, FA: 28cm <sup>2</sup> , MWCO: 100kDa, Effective length: 30cm	1
HFEMN03001030P	ID 1.0mm, Mini, PES, FA: 28cm <sup>2</sup> , MWCO: 300kDa, Effective length: 30cm	1
HFEMN05001030P	ID 1.0mm, Mini, PES, FA: 28cm <sup>2</sup> , MWCO: 500kDa, Effective length: 30cm	1
HFEMN07501030P	ID 1.0mm, Mini, PES, FA: 28cm <sup>2</sup> , MWCO: 750kDa, Effective length: 30cm	1
HFEMN01001060P	ID 1.0mm, Mini, PES, FA: 56cm <sup>2</sup> , MWCO: 100kDa, Effective length: 60cm	1
HFEMN03001060P	ID 1.0mm, Mini, PES, FA: 56cm <sup>2</sup> , MWCO: 300kDa, Effective length: 60cm	1
HFEMN05001060P	ID 1.0mm, Mini, PES, FA: 56cm <sup>2</sup> , MWCO: 500kDa, Effective length: 60cm	1
HFEMN07501060P	ID 1.0mm, Mini, PES, FA: 56cm <sup>2</sup> , MWCO: 750kDa, Effective length: 60cm	1
HFEMIO1001030P	ID 1.0mm, Minilab, PES, FA: 94cm <sup>2</sup> , MWCO: 100kDa, Effective length: 30cm	1
HFEMIO3001030P	ID 1.0mm, Minilab, PES, FA: 94cm <sup>2</sup> , MWCO: 300kDa, Effective length: 30cm	1
HFEMIO5001030P	ID 1.0mm, Minilab, PES, FA: 94cm <sup>2</sup> , MWCO: 500kDa, Effective length: 30cm	1
HFEMIO7501030P	ID 1.0mm, Minilab, PES, FA: 94cm <sup>2</sup> , MWCO: 750kDa, Effective length: 30cm	1
HFEMIO1001060P	ID 1.0mm, Minilab, PES, FA: 188cm <sup>2</sup> , MWCO: 100kDa, Effective length: 60cm	1
HFEMIO3001060P	ID 1.0mm, Minilab, PES, FA: 188cm <sup>2</sup> , MWCO: 300kDa, Effective length: 60cm	1
HFEMIO5001060P	ID 1.0mm, Minilab, PES, FA: 188cm <sup>2</sup> , MWCO: 500kDa, Effective length: 60cm	1
HFEMIO7501060P	ID 1.0mm, Minilab, PES, FA: 188cm <sup>2</sup> , MWCO: 750kDa, Effective length: 60cm	1
HFELA01001030P	ID 1.0mm, Lab, PES, FA: 170cm <sup>2</sup> , MWCO: 100kDa, Effective length: 30cm	1
HFELA03001030P	ID 1.0mm, Lab, PES, FA: 170cm <sup>2</sup> , MWCO: 300kDa, Effective length: 30cm	1
HFELA05001030P	ID 1.0mm, Lab, PES, FA: 170cm <sup>2</sup> , MWCO: 500kDa, Effective length: 30cm	1
HFELA07501030P	ID 1.0mm, Lab, PES, FA: 170cm <sup>2</sup> , MWCO: 750kDa, Effective length: 30cm	1
HFELA01001060P	ID 1.0mm, Lab, PES, FA: 340cm <sup>2</sup> , MWCO: 100kDa, Effective length: 60cm	1
HFELA03001060P	ID 1.0mm, Lab, PES, FA: 340cm <sup>2</sup> , MWCO: 300kDa, Effective length: 60cm	1
HFELA05001060P	ID 1.0mm, Lab, PES, FA: 340cm <sup>2</sup> , MWCO: 500kDa, Effective length: 60cm	1
HFELA07501060P	ID 1.0mm, Lab, PES, FA: 340cm <sup>2</sup> , MWCO: 750kDa, Effective length: 60cm	1

# Filtration Device

## Vacuum Filters



### Applications

- 0.1  $\mu\text{m}$  for mycoplasma removal
- 0.22  $\mu\text{m}$  for the sterile filtration of cell culture, media, buffers, and reagents
- 0.45  $\mu\text{m}$  for the clarification of aqueous and viscous solutions

### Features

- For filtration of small volumes from > 50 mL to 1 L
- Large filtration area for the highest flow rates
- Low hold-up volume
- Gamma-ray sterilization

### Specifications

	150mL	250mL	500mL	1000mL
Membrane	PES, Hydrophilic PVDF, Nylon			
Material	Polystyrene (PS)			
Funnel, lid, bottle	High Density Polyethylene (HDPE)			
Funnel adapter, screw cap	Gamma irradiation			
Pore size	0.1 $\mu\text{m}$ , 0.22 $\mu\text{m}$ , 0.45 $\mu\text{m}$ , 0.22/0.1 $\mu\text{m}$ , 0.45/0.22 $\mu\text{m}$			
Sterile	Gamma irradiation			
EFA	19 cm <sup>2</sup>	19 cm <sup>2</sup>	38 cm <sup>2</sup>	63 cm <sup>2</sup>
Package	24 pcs/case	24 pcs/case	9 pcs/case	9 pcs/case
Endotoxin	<0.25EU/ml			
Biosafety	All materials pass USP <88> Biological Reactivity test for Class VI			

### PES Vacuum Filter Ordering Information

Part No.	Volume	Material	Pore size	Filtration area	Qty/pk (pcs)
VFC150MLENP	150mL	PES	0.1µm	19 cm <sup>2</sup>	24
VFC150MLEBP	150mL	Double layer PES	0.22/0.1µm	19 cm <sup>2</sup>	24
VFC150SLFNP	150mL	PES	0.22µm	19 cm <sup>2</sup>	24
VFC150SLESP	150mL	Double layer PES	0.45/0.22µm	19 cm <sup>2</sup>	24
VFC150PAFSP	150mL	PES	0.45µm	19 cm <sup>2</sup>	24
VFC250MLENP	250mL	PES	0.1µm	19 cm <sup>2</sup>	24
VFC250MLEBP	250mL	Double layer PES	0.22/0.1µm	19 cm <sup>2</sup>	24
VFC250SLFNP	250mL	PES	0.22µm	19 cm <sup>2</sup>	24
VFC250SLESP	250mL	Double layer PES	0.45/0.22µm	19 cm <sup>2</sup>	24
VFC250PAFSP	250mL	PES	0.45µm	19 cm <sup>2</sup>	24
VFC500MLENP	500mL	PES	0.1µm	38 cm <sup>2</sup>	9
VFC500MLEBP	500mL	Double layer PES	0.22/0.1µm	38 cm <sup>2</sup>	9
VFC500SLFNP	500mL	PES	0.22µm	38 cm <sup>2</sup>	9
VFC500SLESP	500mL	Double layer PES	0.45/0.22µm	38 cm <sup>2</sup>	9
VFC500PAFSP	500mL	PES	0.45µm	38 cm <sup>2</sup>	9
VFC01MLENP	1000mL	PES	0.1µm	63 cm <sup>2</sup>	9
VFC01MLEBP	1000mL	Double layer PES	0.22/0.1µm	63 cm <sup>2</sup>	9
VFC01LSLFNP	1000mL	PES	0.22µm	63 cm <sup>2</sup>	9
VFC01LSLESP	1000mL	Double layer PES	0.45/0.22µm	63 cm <sup>2</sup>	9
VFC01LPAFSP	1000mL	PES	0.45µm	63 cm <sup>2</sup>	9

### Hydrophilic PVDF Vacuum Filter Ordering Information

Part No.	Volume	Material	Pore size	Filtration area	Qty/pk (pcs)
VFC150SMDNP	150mL	Hydrophilic PVDF	0.22µm	19 cm <sup>2</sup>	24
VFC150SMDSP	150mL	Double Hydrophilic PVDF	0.45/0.22µm	19 cm <sup>2</sup>	24
VFC250SMDNP	250mL	Hydrophilic PVDF	0.22µm	19 cm <sup>2</sup>	24
VFC250SMDSP	250mL	Hydrophilic PVDF	0.45/0.22µm	19 cm <sup>2</sup>	24
VFC500SMDNP	500mL	Hydrophilic PVDF	0.22µm	38 cm <sup>2</sup>	9
VFC500SMDSP	500mL	Hydrophilic PVDF	0.45/0.22µm	38 cm <sup>2</sup>	9
VFC01LSMDNP	1000mL	Hydrophilic PVDF	0.22µm	63 cm <sup>2</sup>	9
VFC01LSMDSP	1000mL	Hydrophilic PVDF	0.45/0.22µm	63 cm <sup>2</sup>	9



### Filter Funnel Ordering information



Part No.	Volume	Material	Pore size	Filtration area	Qty/pk (pcs)
VFF150SLFNP	150mL	PES	0.22µm	19 cm <sup>2</sup>	48
VFF250SLFNP	250mL	PES	0.22µm	19 cm <sup>2</sup>	48
VFF500SLFNP	500mL	PES	0.22µm	38 cm <sup>2</sup>	18
VFF01LSLFNP	1000mL	PES	0.22µm	63 cm <sup>2</sup>	18
VFF150SMDNP	150mL	Hydrophilic PVDF	0.22µm	19 cm <sup>2</sup>	48
VFF250SMDNP	250mL	Hydrophilic PVDF	0.22µm	19 cm <sup>2</sup>	48
VFF500SMDNP	500mL	Hydrophilic PVDF	0.22µm	38 cm <sup>2</sup>	18
VFF01LSMDNP	1000mL	Hydrophilic PVDF	0.22µm	63 cm <sup>2</sup>	18

### Receiver Flask Ordering Information

Part No.	Volume	Qty/pk (pcs)
VFB1500000P	150mL receiver flask	48
VFB2500000P	250mL receiver flask	48
VFB5000000P	500mL receiver flask	18
VFB01L0000P	1000mL receiver flask	18



# Vent Filters

## Aegivast™ ACE filters

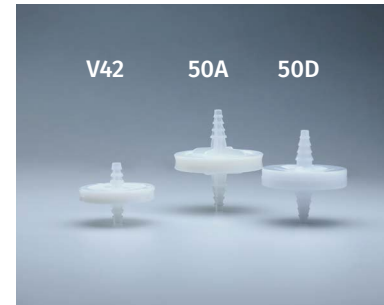
for the sterile venting in BioProcessing

### Features

- Reusable and autoclavable
- Naturally hydrophobic PTFE membrane
- Large surface area provides greater throughput and high air flow rate

### Applications

- Venting bioreactors, fermentation tanks, and carboys
- Sterile gas purging of culture vessels



### Technical Specifications

Type	U13	U25	U33	V42	V50A	V50D
Filtration area	0.72 cm <sup>2</sup>	3.4 cm <sup>2</sup>	4.5 cm <sup>2</sup>	13.8 cm <sup>2</sup>	20 cm <sup>2</sup>	20 cm <sup>2</sup>
Inlet/Outlet connections	Inlet: Female luer lock; Outlet: Male luer slip			6-9mm(1/4"-3/8") stepped hose barb	6-13mm(1/4"-1/2") stepped hose barb	
Materials	Membrane: PTFE; Housing: Polypropylene					
Pore size	0.2µm					
Biosafety	All materials pass USP <88> Class VI					

### Sterilization

- U13/25/33 syringe filters---Sterile by Gamma irradiation, individually packed
- V42/V50A/V50D filters, can be sterilized by autoclaving at 130 °C for 30 min, 20 times

### Ordering information

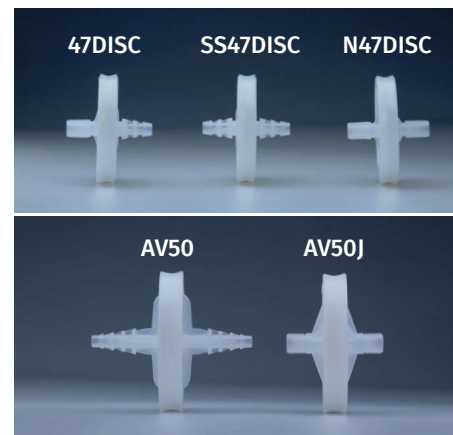
Part No.	Membrane	Filter type	Filtration Area	Qty/pk (pcs)
V42EEACEBA1P	ACEB, 0.2µm	V42	13.8cm <sup>2</sup>	1
V5ABBACEBA1P	ACEB, 0.2µm	V50A	20 cm <sup>2</sup>	1
V5DBBACEBA1P	ACEB, 0.2µm	V50D	20 cm <sup>2</sup>	1
SFUACE-2013S	ACEB, 0.2µm	SFU13	0.72cm <sup>2</sup>	1
SFUACE-2025S	ACEB, 0.2µm	SFU25	3.4cm <sup>2</sup>	1
SFUACE-2033S	ACEB, 0.2µm	SFU33	4.5cm <sup>2</sup>	1

# 47DISC / SS47DISC / N47DISC / AV50 filters

## for Use in Air/Gas and Vent

### Applications

- Filtering aggressive solvents
- For air/gas venting
- Sterile in-line gas filter



### Technical Specifications

	47DISC	SS47DISC	N47DISC	AV50	AV50J
Membrane	Hydrophobic PTFE Membrane, Glass Fiber				
Pore size	0.01, 0.2µm (other pore size are available)				
Housing	Polypropylene				
Inlet	1/8" NPT	1/4" to 3/8" hose barb	1/8"NPT	1/4" to 1/2" hose barb	1/4" jaco
Outlet	1/4" to 3/8" hose barb	1/4" to 3/8" hose barb	1/8"NPT	1/4" to 1/2" hose barb	1/4" jaco
Sealing technology	Thermal				
Biosafety	All materials passed USP class VI				

### Ordering information

Part No.	Material	Filter type	Filtration area	Package
47DISC-PTFE0001	PTFE, 0.01µm	47DISC	7.3cm <sup>2</sup>	1
SS47DISC-PTFE0001	PTFE, 0.01µm	SS47DISC	13.8 cm <sup>2</sup>	1
N47DISC-PTFE0001	PTFE, 0.01µm	N47DISC	13.8 cm <sup>2</sup>	1
47DISC-PTFE0020	PTFE, 0.2µm	47DISC	7.3cm <sup>2</sup>	1
SS47DISC-PTFE0020	PTFE, 0.2µm	SS47DISC	13.8 cm <sup>2</sup>	1
N47DISC-PTFE0020	PTFE, 0.2µm	N47DISC	13.8 cm <sup>2</sup>	1
AV50-PTFE0001	PTFE, 0.01µm	AV50	19.6 cm <sup>2</sup>	1
AV50-PTFE0020	PTFE, 0.2µm	AV50	19.6 cm <sup>2</sup>	1
AV50J-PTFE0001	PTFE, 0.01µm	AV50J	19.6 cm <sup>2</sup>	1
AV50J-PTFE0020	PTFE, 0.2µm	AV50J	19.6 cm <sup>2</sup>	1

# Capsule Filters

## Bricap® A50 Filters

### of Liquids Filtration

#### Features

- Highest flow rates with a large surface of filtration (20 cm<sup>2</sup>)
- No loss of protein with a low protein affinity membrane
- Incorporated prefilter with a larger pore size
- Broad chemical compatibility

#### Applications

- Sterile filtration of cell culture media and other solutions
- Clarification of media, aqueous solutions and solvent mixtures
- Filtration of media that contain sera and difficult-to-filter solutions



#### Technical Specifications

Filter type	<b>Bricap® A50</b>
Membrane	PES, Hydrophilic PVDF
Pore size	0.2+0.1µm, 0.45+0.2µm
Material	Polypropylene
Inlet/Outlet connections	6-13mm(1/4"-1/2") stepped hose barb with filling bell
Filtration area	20cm <sup>2</sup>
Biosafety	Endotoxin: <0.25 EU/ml All materials pass USP <88> Class VI
Sterility	By Autoclaving at 130°C for 30min, 25 times; Sterile by Gamma irradiation

#### Ordering information

Part No.	Membrane	Pore size	Sterile	Package
A50BBMLEBA1P	PES	0.2+0.1µm	Non-sterile, autolavable	1
A50BBMLEBS1P	PES	0.2+0.1µm	Sterile	1
A50BBSAFSA1P	PES	0.45+0.2µm	Non-sterile, autolavable	1
A50BBSAFSS1P	PES	0.45+0.2µm	Sterile	1
A50BBSMDAA1P	Hydrophilic PVDF	0.2+0.1µm	Non-sterile, autolavable	1
A50BBSMDAS1P	Hydrophilic PVDF	0.2+0.1µm	Sterile	1
A50BBSMDSA1P	Hydrophilic PVDF	0.45+0.2µm	Non-sterile, autolavable	1
A50BBSMDSS1P	Hydrophilic PVDF	0.45+0.2µm	Sterile	1

# Bricap® C01 Capsule Filters

## Applications

- Sterile filtration of cell culture media and other solutions
- Clarification of media, aqueous solutions and solvent · mixtures
- Filtration of media that contain sera and difficult-to-filter solutions



## Technical Specifications

Filter type	<b>Bricap C01</b>	
Membrane	High flow PES; Low adsorption Hydrophilic PVDF	
Pore size	0.45+0.2µm, 0.65+0.2µm	
Material	Core/Cage/End caps/Housing	Polypropylene
	Vent o-ring	Silicone
Inlet/Outlet connections	6-13mm(1/4"-1/2") stepped hose barb	
Vent/Drain	1/4 hose barb with double O-ring seal	
Filtration area	180cm <sup>2</sup>	
Biosafety	Endotoxin: <0.25 EU/ml All materials pass USP <88> Class VI	
Non-Fiber Releasing	Complies with the title 21 of the Code of Federal Regulations (CFR), section 210.3(b)(6) and 211.72	
Sterility	By Autoclaving at 130 °C for 30 min, 25times; Sterile by Gamma irradiation	

## Ordering Information

Part No.	Material	Pore size	Sterility	Package
C01ABSAFSA1P	PES	0.45+0.2µm	Non-sterile, autoclavable	1
C01ABSAFSS1P	PES	0.45+0.2µm	Sterile	1
C01ABSAFHA1P	PES	0.65+0.2µm	Non-sterile, autoclavable	1
C01ABSAFHS1P	PES	0.65+0.2µm	Sterile	1
C01ABSMDSA1P	Hydrophilic PVDF	0.45+0.2µm	Non-sterile, autoclavable	1
C01ABSMDS1P	Hydrophilic PVDF	0.45+0.2µm	Sterile	1
C01ABSMCHA1P	Hydrophilic PVDF	0.65+0.2µm	Non-sterile, autoclavable	1
C01ABSMCHS1P	Hydrophilic PVDF	0.65+0.2µm	Sterile	1

# LUPW Capsule Filters

## Typical application

- For lab water purification system



## Technical Specifications

	LUPW / LUPWII	LUPWG	LUPWH
Membrane		PES	
Pore size		0.1µm, 0.2µm	
Housing		Polypropylene	
Inlet	1/4"NPT	1/4"G	6-13mm(1/4"-1/2")
Outlet	6-13mm(1/4"-1/2") stepped hose barb with filling bell		
Sealing technology	Thermal Bonding		
Biosafety	All materials pass USP <88> Class VI		

## Ordering Information

Part No.	Membrane	Filter type	Filtration area	Qty/pk (pcs)
LUPW-PES0020P	PES, 0.2µm	LUPW	150 cm <sup>2</sup>	1
LUPWII-PES0020P	PES, 0.2µm	LUPWII	310 cm <sup>2</sup>	1
LUPWG-PES0022P	PES, 0.2µm	LUPWG	150 cm <sup>2</sup>	1
LUPWH-PES0022P	PES, 0.2µm	LUPWH	150 cm <sup>2</sup>	1

# Groundwater Sampling Capsule Filters

for collecting groundwater prior to dissolved metal analysis

## Specifications

Membrane Material	PES
Pore Size	0.45µm
Filtration Area	500cm <sup>2</sup> , 900cm <sup>2</sup>
Inlet/Outlet	GWP Inlet&Outlet: 1/8" NPT+1/2" Hose Barb
	GWQ: Inlet 1/8" NPT+1/2" Hose Barb; Outlet 1/8" NPT



## Ordering Information

Part No.	Description	Qty/pk (pcs)
GWP-SPSSM0.45	GWP capsule filter with PES, Filtration Area 900cm <sup>2</sup> , Inlet&Outlet: 1/8" NPT+1/2" HB	1
GWQ-SPSSM0.45	GWQ capsule filter with PES, Filtration Area 900cm <sup>2</sup> , Inlet 1/8" NPT+1/2" HB; Outlet 1/8" NPT	1
GWQ-500-SPSSM0.45	GWQ capsule filter with PES, Filtration Area 500cm <sup>2</sup> , Inlet 1/8" NPT+1/2" HB; Outlet 1/8" NPT	1

# Microbiology Testing

## Sterile Gridded Membrane Filter

### Features

- MCE, Hydrophilic PVDF membrane available
- Membrane filters are available with or without grid, individually, sterile packaged or non-sterile packaged
- Continuous packed membrane filters are designed for use in filter dispensers
- Consistent performance

### Applications

- Colony counting
- Particle testing
- Microscopy



### Technical Specifications

Pore size	0.2µm / 0.45µm
Coliform retention	100%
Recovery rate lot-released	≥90%

### Order information

Part No.	Material	Diameter	Pore size	Package	Qty / pk (pcs)
MBWGM-2247S	MCE white /black grid	47mm	0.22µm	Individually packed	100
MBWGM-4547S	MCE white /black grid	47mm	0.45µm	Individually packed	100
MBWGM-2250S	MCE white /black grid	50mm	0.22µm	Individually packed	100
MBWGM-4550S	MCE white /black grid	50mm	0.45µm	Individually packed	100
MBWGM-2247SC	MCE white /black grid	47mm	0.22µm	Continuous packed	150
MBWGM-4547SC	MCE white /black grid	47mm	0.45µm	Continuous packed	150
MBMCE-2247S	White MCE	47mm	0.22µm	Individually packed	100
MBMCE-4547S	White MCE	47mm	0.45µm	Individually packed	100
MBMCE-2250S	White MCE	50mm	0.22µm	Individually packed	100
MBMCE-4550S	White MCE	50mm	0.45µm	Individually packed	100
MBWGM-2247	MCE white/black grid	47mm	0.22µm	Non-sterile	50
MBWGM-4547	MCE white/black grid	47mm	0.45µm	Non-sterile	50
MBWGM-2250	MCE white/black grid	50mm	0.22µm	Non-sterile	50
MBWGM-4550	MCE white/black grid	50mm	0.45µm	Non-sterile	50



# Membrane Dispenser

## Features

- Dispense sterile membranes with hands-free convenience
- Compact design and lightweight
- Reduces the risk of accidental contamination



## Order information

Part No.	Description	Package
MD01AU	Membrane dispenser	1

# Filtration Units

## All-in-on Filters

## Features

- Sterile by Gamma irradiation
- Single-Use filtration units featuring a Click-Fit closure
- Transparent funnel for easy monitoring of the filtration progress
- Easy handling



## Materials

PP

## Order information

Part No.	Membrane	Pore size	Volume	Package	Qty/pk (pcs)
A47V-GMC0022100	MCE white /black grid	0.22µm	100mL	Sterile in bags	5
A47V-GMC0045100	MCE white /black grid	0.45µm	100mL	Sterile in bags	5
A47V-GMC0022250	MCE white /black grid	0.22µm	250mL	Sterile in bags	5
A47V-GMC0045250	MCE white /black grid	0.45µm	250mL	Sterile in bags	5

# Filter Funnels

## Features

- Sterile by Gamma irradiation
- 100mL and 250mL available
- Use with 47mm membranes



## Order information

Part No.	Volume	Package	Qty/pk (pcs)
A47U-100	100mL	Sterile in bags	10
A47U-250	250mL	Sterile in bags	10

# S58 Filters

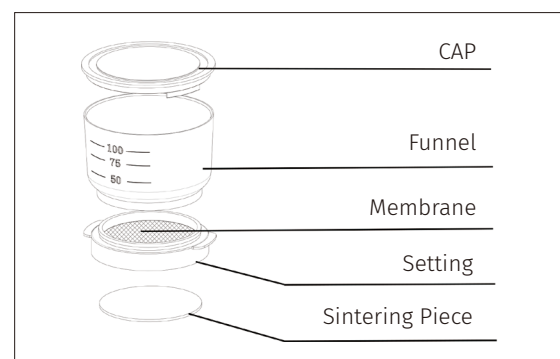
Cobetter S58 filter funnels are used for bioburden testing and general microbiological analysis.

## Features

- Sterile, ready-to-use
- 50mm sealed integral membrane filter
- Adapt to Milliflex vacuum pump

## Materials

Funnel PP  
Lid PETG



## Order information

Part No.	Description	Membrane	Qty/pk (pcs)
S58-WGMCE0045P	Filter funnels sterile,100mL,white /black grid	MCE	1
S58-PVDF0045P	Filter funnels sterile,100mL,white /black grid	PVDF	1

# SS Manifold

## Features

- 100% Stainless steel for minimized cleaning effort
- Quick connection adapters
- Low working height for ergonomic working in laminar flow
- Autoclavable at 121°C for 30 min

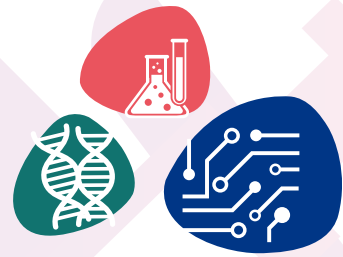
## Applications

- Microbiological quality control of liquid samples:
- Beverages (beer, wine, soft drinks, bottled water)
  - Pharmaceutical analysis
  - Environmental water testing (water monitoring)
  - Cosmetics



## Order information

Part No.	Description	Dimension (L × H × W)	Package
M301SS	3 branch manifold	474 × 120 × 98mm	1



Filtration  
Separation  
Purification

